



MPOG

MULTICENTER PERIOPERATIVE
OUTCOMES GROUP

MSQOC

MICHIGAN SURGICAL QUALITY
COLLABORATIVE



**Blue Cross
Blue Shield
Blue Care Network**
of Michigan

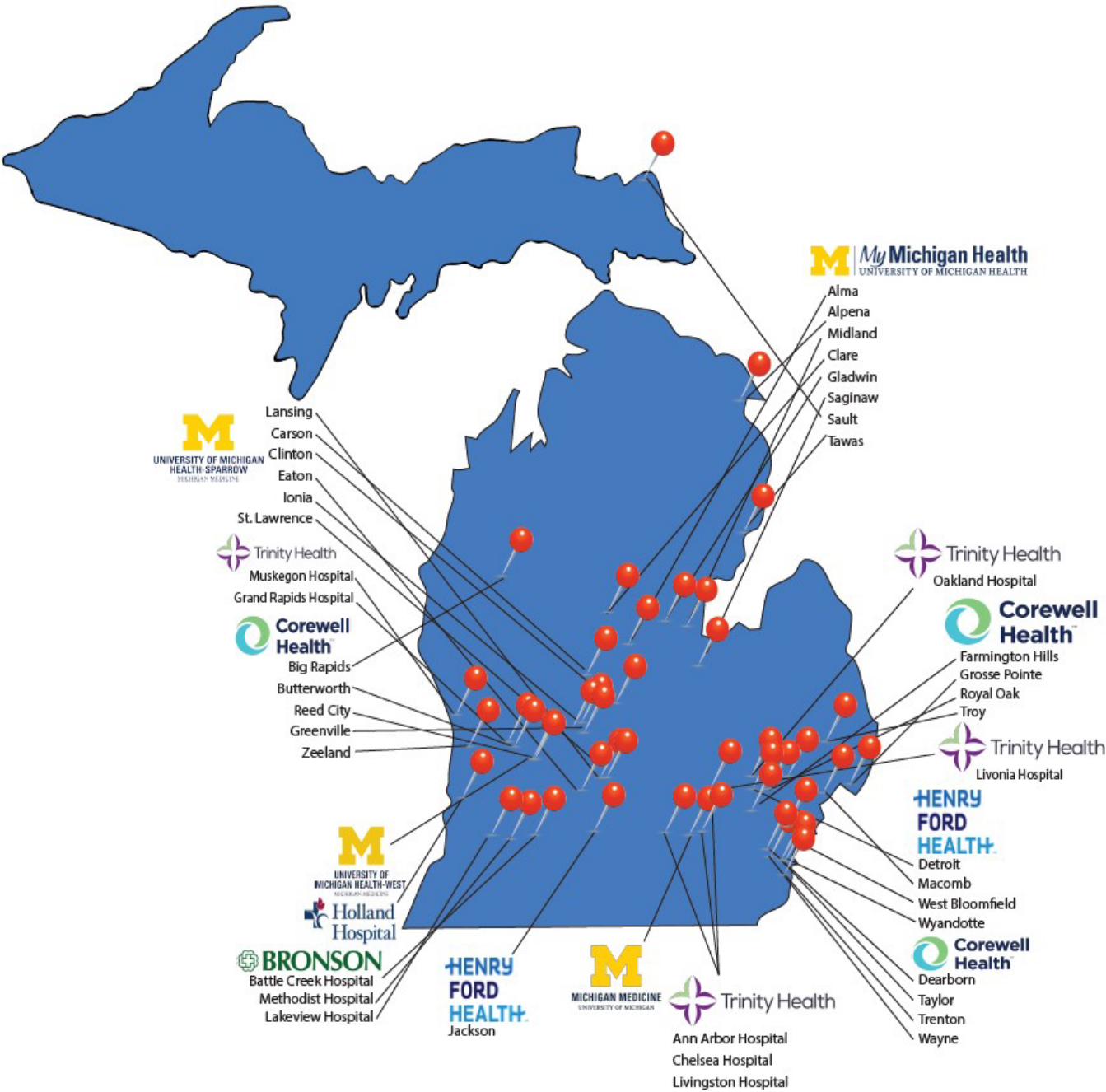
Nonprofit corporations and independent licensees
of the Blue Cross and Blue Shield Association

**March 13, 2026
Lansing, MI**

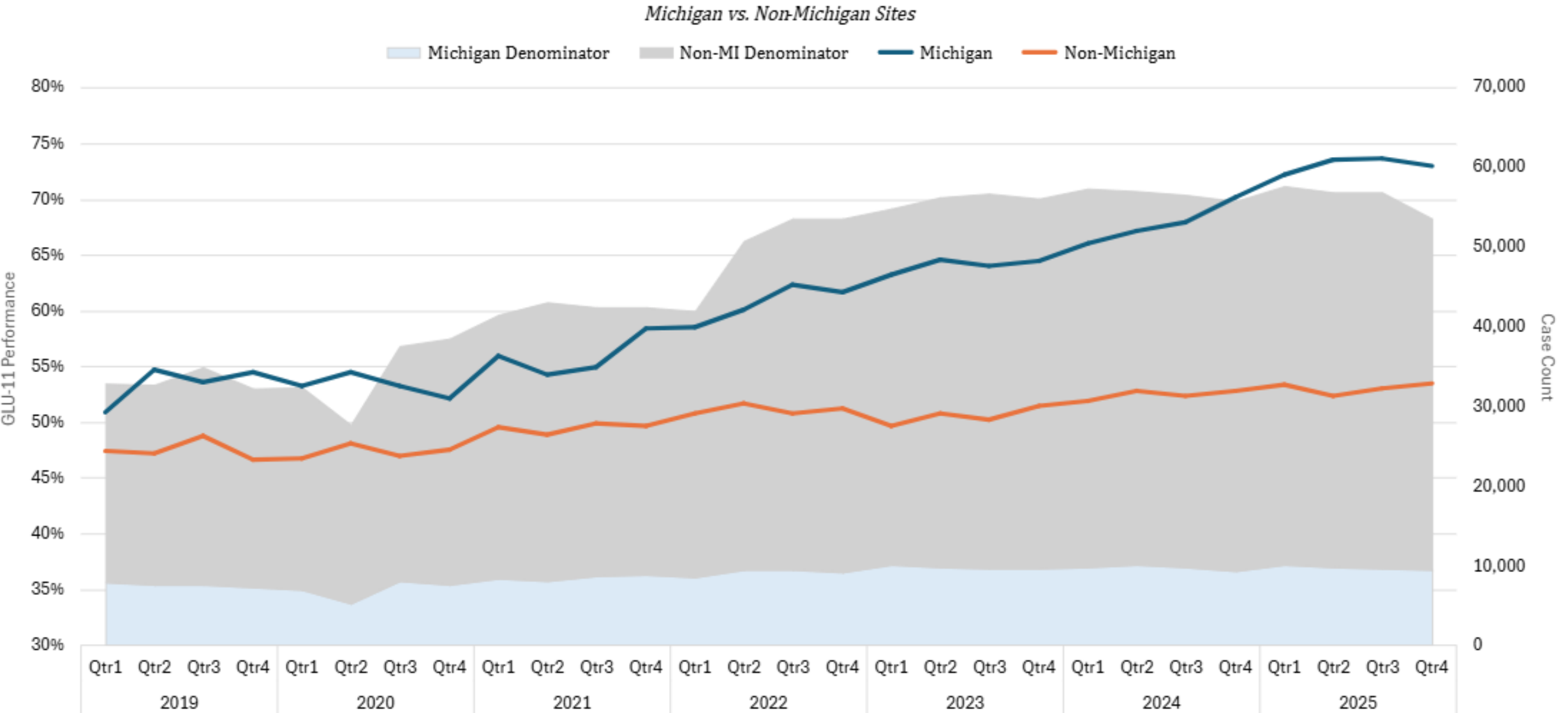
Thank You!

...to our colleagues
ACQRs
Quality Champions
Anesthesiologists, CRNAs,
and CAA

...and our new sites
My Michigan Saginaw
My Michigan Tawas



Timely Treatment of Hyperglycemia (BG > 180 mg/dL)

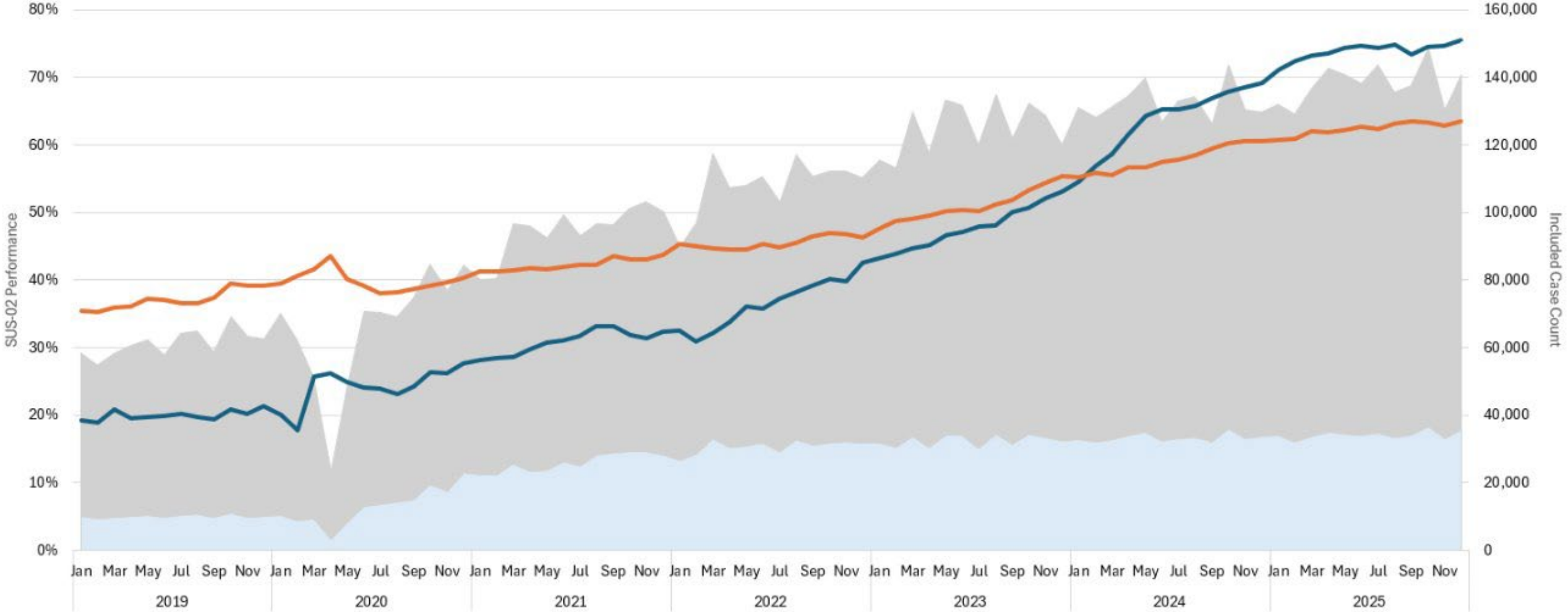


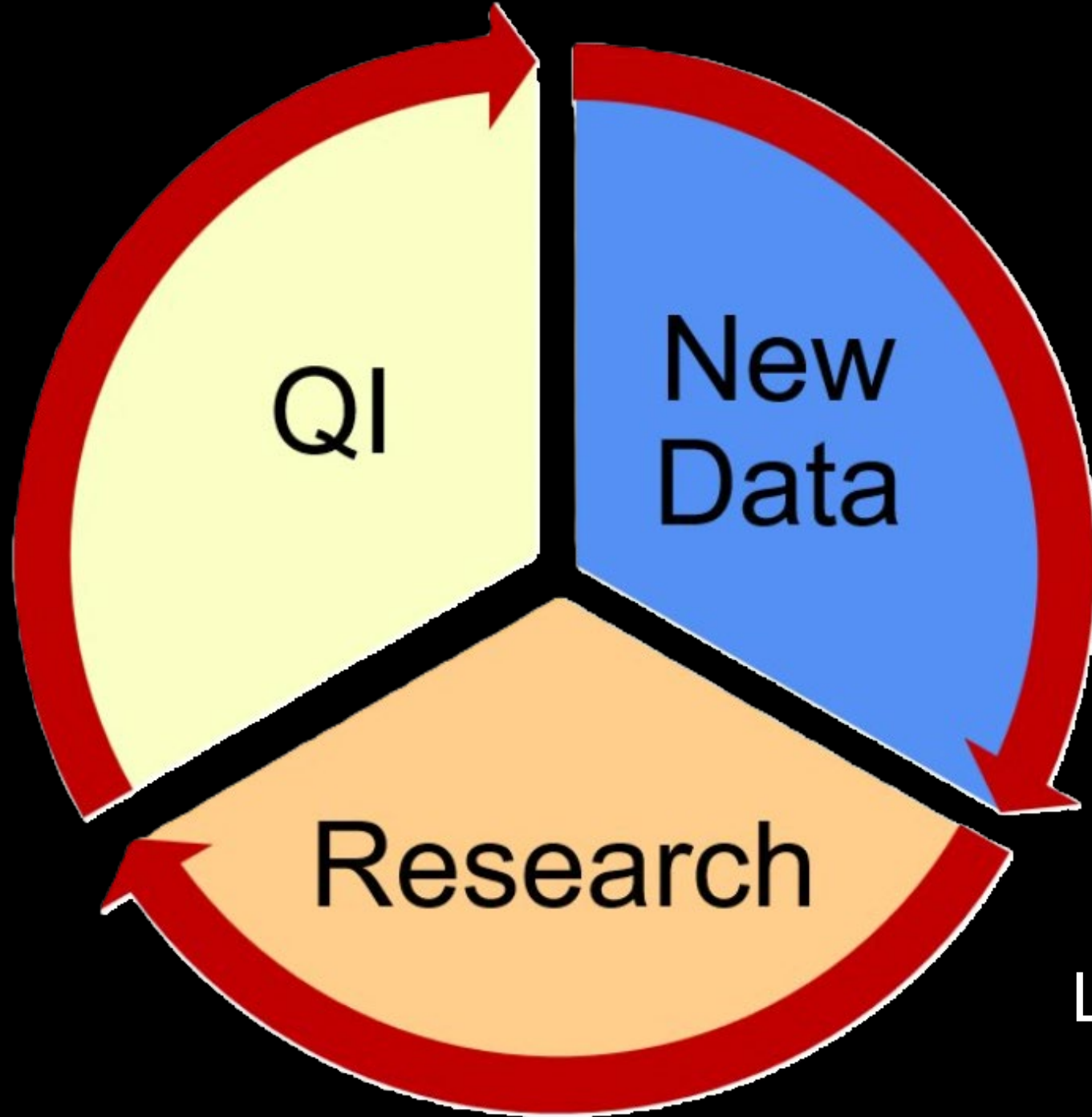
Efficient use of inhaled anesthesia medications

MPOG Collaborative SUS-02 Performance

Michigan Vs. Non-Michigan Sites

MI: Denominator Non-MI:Denominator Michigan Non-Michigan





CQIs as a
Learning Health
System

THRIVE

Outcomes of Recovery after Intravenous propofol vs. inhaled Volatile an



CONTRACTION CS



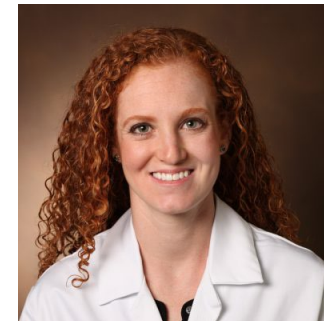
IntraOp Ox

Impact of Intraoperative Oxygenation Strategies on Patient Outcomes



VEGA²

Norepinephrine vs Phenylephrine to Prevent AKI



Our Team



Kathryn Buehler,
MS, RN, CPPS, PMP
CLINICAL PROGRAM
MANAGER



Michael Burns, MD,
PhD
FACULTY



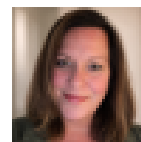
Mel Calabio, MSHI,
BSN, RN, NI-BC
QUALITY
IMPROVEMENT
SPECIALIST



Megan Charette,
BSN, RN, MPH, MBA
QUALITY
IMPROVEMENT
SPECIALIST



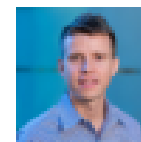
Sachin Khetarpal,
MD, MBA
EXECUTIVE
DIRECTOR



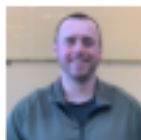
Tory Latta, MBA
ADMINISTRATIVE
PROGRAM
MANAGER



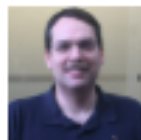
Tiffany Malenfant,
MSN, RN-BC
CLINICAL
INFORMATICS
SPECIALIST



Mike Mathis, MD
RESEARCH
DIRECTOR



David Clark
PROJECT MANAGER



Robert Coleman
PROGRAMMER



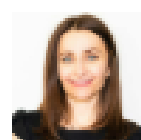
Douglas Colquhoun,
MD ChS, MSc, MPH
ASSOCIATE
RESEARCH
DIRECTOR



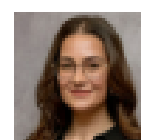
Mark Dehring
TECHNICAL LEAD



**Kamolnat (Kam)
Mirzai, PhD**
MIXED METHODS
SPECIALIST



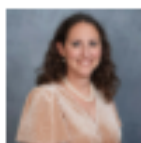
Diana O'Dell, MPH
RESEARCH
FACILITATOR



Rebecca Pantis
RESEARCH
PROJECT MANAGER



Ronnie Rigger
ADMINISTRATIVE
SPECIALIST



Leanna Delthey
RESEARCH
FACILITATOR



Anthony Edelman,
MD, MBA, FASA
ASSOCIATE
QUALITY
IMPROVEMENT
DIRECTOR



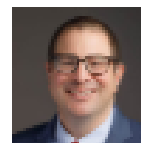
Nicole Eyrich
DIGITAL
HEALTH/TRIALS
PROJECT MANAGER



Chris Heiden
TECHNICAL
SUPPORT LEAD



**Michelle
Romanowski**
DEVELOPER



Robert Schonberger,
MD
ASSOCIATE
RESEARCH
DIRECTOR



Nirav Shah, MD
QUALITY
IMPROVEMENT
DIRECTOR



Anik Sinha
DEVELOPER



Melanie Herren,
MSN, RN, CNOR
CLINICAL
INFORMATICS
SPECIALIST



Allison Janda, MD
RESEARCH
FACULTY, CARDIAC
QI SUBCOMMITTEE
LEAD



Jeremy Jared
TECHNICAL TEAM
MANAGER



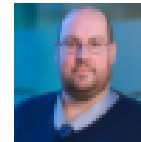
Jay Jeong, MSI
DEVELOPER



Frances Guida
Smiatacz
ADMINISTRATIVE
ASSISTANT



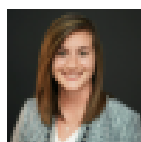
Rachel Stumpf
RESEARCH
ASSISTANT



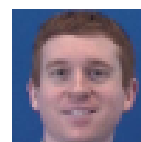
John Vandervest,
MS
DATA SCIENTIST



Shelley Vaughn,
MPH
LEAD RESEARCH
FACILITATOR



Meredith Wade,
MSN, RN
QI TEAM
LEAD/PEDIATRIC
PROGRAM
MANAGER

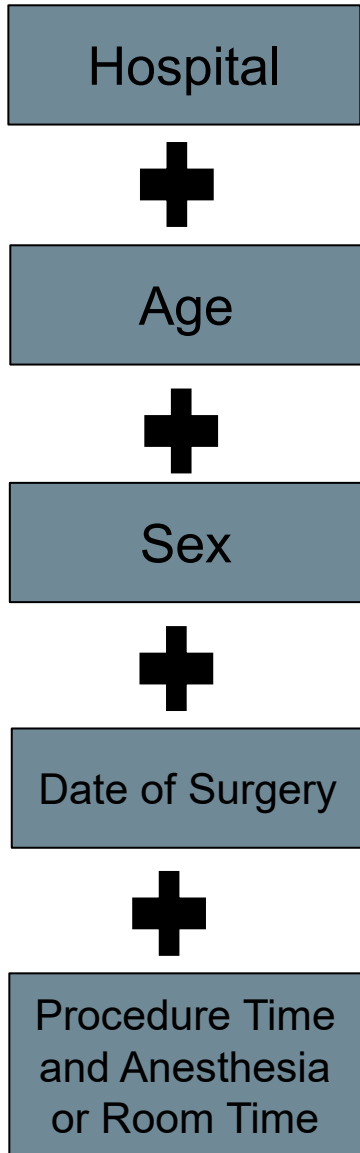


Andrew Zittleman,
MSN, RN
CLINICAL
INFORMATICS
SPECIALIST



Present

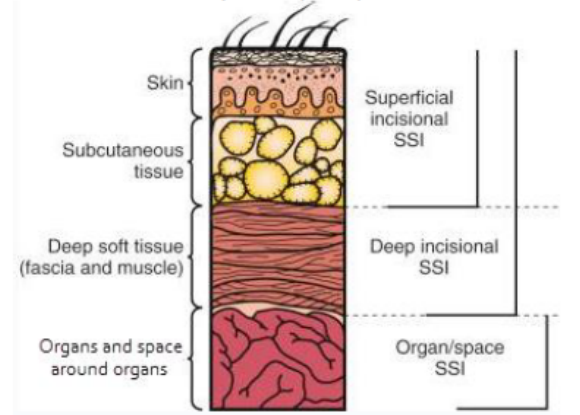
SSI – A Quest to Combine the Best of ASPIRE and MSQC



Surgical Site Infection

Intent of Variable: To capture the outcome of Superficial Incisional, Deep Incisional or Organ/Space Surgical Site Infection (SSI) which is a substantial cause of morbidity, prolonged hospitalization, and death, and the costliest healthcare-acquired infection type.

Definition: A surgical site infection (SSI) is an infection that occurs after the principal operative procedure in the part of the body/incision where that surgery took place. Deep Incisional SSIs are typically more severe than the Superficial SSI category. Organ/Space SSIs are typically the most severe and are more likely to require procedural intervention.



<https://clinicalpub.com/surgical-site-infection-prevention/>

Surgical Site Infections

Number of SSI: 3 (4%)



ASPIRE Average: 8%

SSI-01-MSQC: Surgical Site Infection, Colectomy [More Info](#)

This measure is based on SSI data obtained from the Michigan Surgical Quality Collaborative (MSQC). MSQC sites (~70 across Michigan) extract data from a representative sample of colectomy cases. We have matched this sample of cases to ASPIRE cases. Please note this measure will likely not reflect all the colectomy cases at your institution. Additionally, there are MSQC hospitals that are not members of ASPIRE and not represented in the performance benchmarks.

Case List





Future



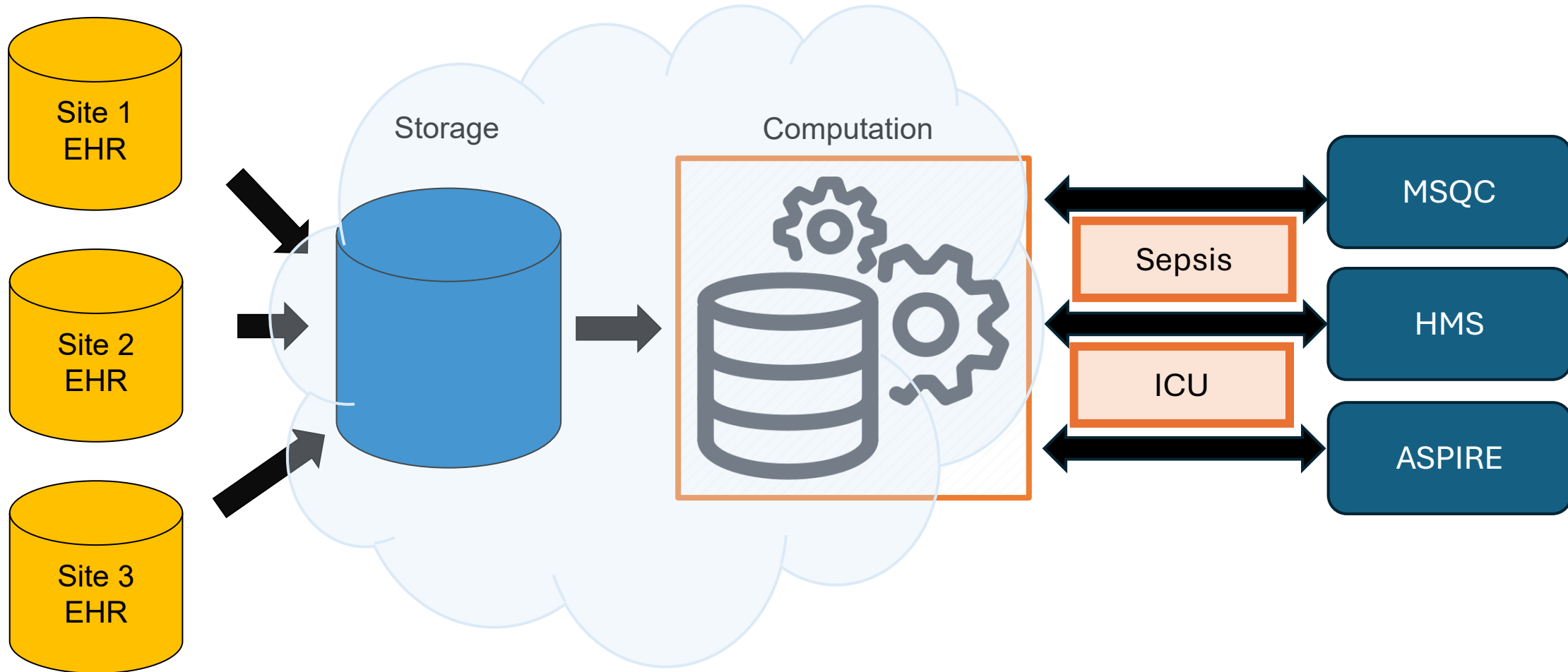
Pilot Project – Can we determine sepsis and unplanned ICU admission at scale?




Nonprofit corporations and independent licensees of the Blue Cross and Blue Shield Association



How can we help our abstractors, ACQRs, SQCRs, Quality Champions?





**Later this
am...**

AGENDA

MSQC Quarterly Meeting
Schoolcraft College-VisTaTech Center
18600 Haggerty Road
Livonia, Michigan 48152

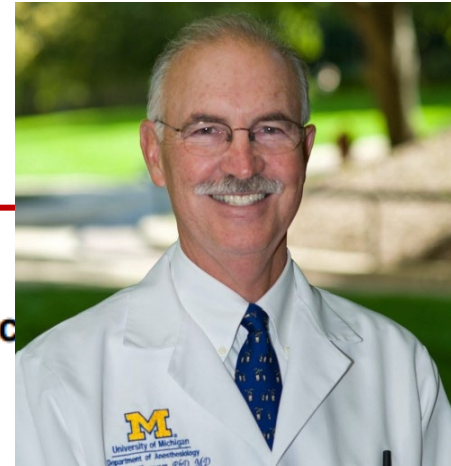
December 12, 2014
10 am – 2:30 pm

8:30 – 9:45 am	Publication & Research Breakfast
8:30 – 9:45 am	Anesthesia Breakfast
10:00 – 10:15 am	Welcome—Darrell A. Campbell, Jr., MD Executive Summary
10:15 – 11:00 am	Postoperative Outcomes: Does the Mind Really Matter? Michael S. Avidan, MD Professor of Anesthesiology and Surgery Washington University School of Medicine; St. Louis
11:00 – 11:45 am	“Reducing the Risk of Surgical Site Infections: Will we Ever Get to the Promised Land?” Charles E. Edmiston Jr., PhD CIC Professor of Surgery, Washington University School of Medicine
11:45 – 12:45 pm	Lunch
12:45 – 1:30 pm	Point-Counterpoint Rodrigo A. Gomez, MD Ann Arbor, Michigan Christina M. Starnes, MD Professor, University of Michigan
1:30 -2:30 pm	Surgical Site Infection Surgical Site Infection

**MSQC Quarterly Meeting
Schoolcraft College-VisTaTech Center
18600 Haggerty Road
Livonia, Michigan 48152**

**December 12, 2014
10 am – 2:30 pm**

8:30 – 9:45 am



Publication

ast

**Darrell A. Campbell, Jr., MD
Executive Summary**

ASPIRE

Anesthesiology Performance Improvement and Reporting Exchange

**ASPIRE Breakfast meeting at Michigan Surgical Quality Collaborative
Committee Meeting
December 12, 2014**



Thank You